

# FBA12G (120<sup>□</sup> x 38<sup>L</sup>)



EMINEBEA.COM

**THIS MODEL IS NO LONGER AVAILABLE FOR NEW DESIGNS**  
SEE OTHER MODELS AVAILABLE IN THIS FRAME SIZE HERE - 4715KL

## General Specifications

### Allowable Ambient Temperature Range:

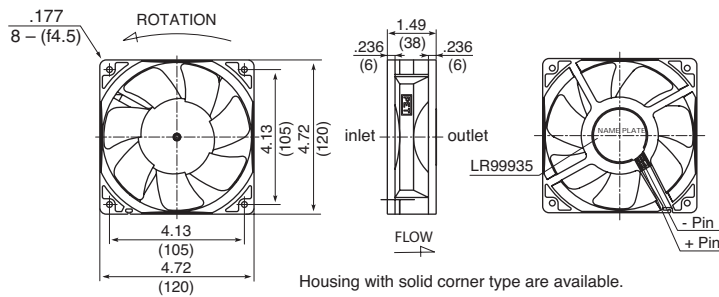
- 10°C ~ +70°C (65%RH) (Operating)
- 40°C ~ +75°C (65%RH) (Storage)
- (non-condensing environment)

## Expected Life

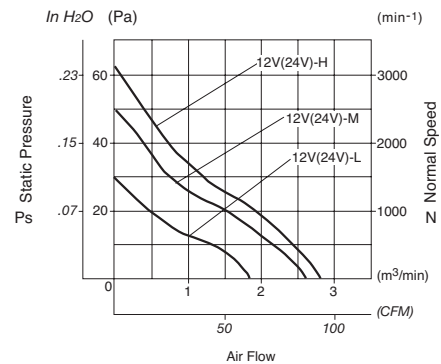
**Failure Rate: 10%**  
30,000 Hours (25°C, 65%RH)

## Outline

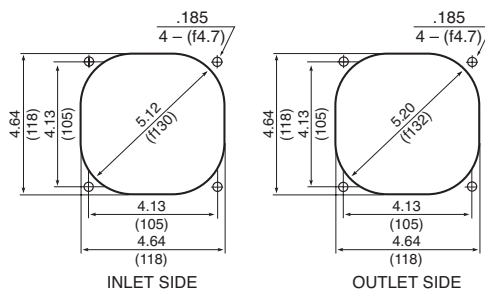
Units:  $\frac{\text{inch}}{\text{(mm)}}$



## Characteristic Curves



## Panel Cut-outs



## Material

Bearing: Hydro Wave Bearing

## Specifications

MODEL	Rated Voltage	Operating Voltage	Current	Input Power	Rated Speed	Max. Air Flow		Max. Static Pressure		Noise	Mass
	(V)	(V)	(A) <sup>*1</sup>	(W) <sup>*1</sup>	(min <sup>-1</sup> ) <sup>*1</sup>	CFM <sup>*1</sup>	(m <sup>3</sup> /min) <sup>*1</sup>	in H <sub>2</sub> O	(Pa) <sup>*1</sup>	(dB) <sup>*1</sup>	(g)
FBA12G 12L	12	7.0 ~ 13.8	170	2.04	1700	68.9	1.94	.13	32.4	30.0	270
FBA12G 12M	12	7.0 ~ 13.8	280	3.36	2100	86.5	2.45	.18	47.1	35.5	270
FBA12G 12H	12	7.0 ~ 13.8	370	4.44	2500	103.8	2.94	.26	66.7	41.5	270
FBA12G 24L	24	14.0 ~ 27.6	96	2.30	1700	68.9	1.95	.13	32.4	30.0	270
FBA12G 24M	24	14.0 ~ 27.6	124	2.98	2100	86.5	2.45	.18	47.1	35.5	270
FBA12G 24H	24	14.0 ~ 27.6	200	4.80	2500	103.8	2.94	.26	66.7	41.5	270

Rotation: Clockwise

Airflow Outlet: Air Out Over Struts

\*1: Average Values in Free Air