

User's Guide

SLIMSCSI 1460 ADAPTER

Adaptec, Inc.
691 South Milpitas Boulevard
Milpitas, CA 95035

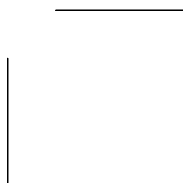
Copyright © 1998, Adaptec, Inc.
All rights reserved. Adaptec and the
Adaptec logo are trademarks of Adaptec,
Inc. which may be registered in some
jurisdictions.

Printed in Singapore
STOCK NO.: 511605-00, Rev. B BKB 2/98

▼▼▼▼ SlimSCSI 1460 Adapter

User's Guide





▼▼▼▼ Contents

Introduction 1

Where Do I Start? 1

Contents of Kit 1

System Requirements 2

Installing the SlimSCSI 1460 2

Completing the Installation 6

Updating the Windows 95 Miniport Driver 6

Completing the SlimSCSI Installation in Windows 3.1 7

Completing the SlimSCSI Installation in Windows NT 8

 If Windows NT Is Not Installed on Your PC 8

 If Windows NT Is Installed on Your PC 9

Completing the SlimSCSI Installation in OS/2 11

Using the SlimSCSI 1460 13

Hot Plugging 13

Disk Partitioning 14

Understanding SCSI 15

SCSI IDs 15

Terminating the SCSI Bus 16

Obtaining SCSI Cables 16

 Connector Types 17

Troubleshooting 18

General Hardware Troubleshooting 18

Windows 95 Troubleshooting 18

Windows NT Troubleshooting 22

OS/2 Troubleshooting 22

Contacting Adaptec 23

Electronic Support 23

Technical and Product Support 24

Sales and Ordering Information 24

Introduction

Congratulations on your purchase of Adaptec's SlimSCSI® 1460. The SlimSCSI 1460 allows you to connect up to seven SCSI devices to your portable PC, including Zip drives, CD-ROM drives, hard disk drives, scanners, and other devices.

Where Do I Start?

- 1 Follow the instructions for installing the SlimSCSI 1460 and connecting your SCSI devices to it.
- 2 Install the software driver for the operating system you are using - Windows® 95 (page 6), Windows® 3.1 (page 7), Windows NT™ (page 8), or OS/2 (page 11).
- 3 (*Optional*) Install Adaptec EZ-SCSI software by following the instructions in the *Adaptec EZ-SCSI Quick Reference*. (EZ-SCSI is not required to operate the SlimSCSI 1460.)

Contents of Kit

- SlimSCSI 1460 PC Card-to-SCSI Adapter
- Windows 95, Windows NT, and OS/2 driver diskettes
- *SlimSCSI 1460 User's Guide*
- 50-pin high-density cable and 50-pin low-density cable
- Adaptec® EZ-SCSI® software for Windows 3.1, Windows 95, and Windows NT
- Mail-in card for free DB25 cable
- Registration card

System Requirements

- Portable PC with a PC Card Type II, Type III, or Toshiba Type IV slot
- MS-DOS version 5.x or 6.x, Microsoft Windows 95, Windows NT version 3.51 or 4.0, Windows 3.x, Windows for Workgroups version 3.1 or 3.11, DR DOS, OS/2 version 2.x, or OS/2 Warp

Installing the SlimSCSI 1460

Follow these steps to install the SlimSCSI 1460 and connect your SCSI devices to it:

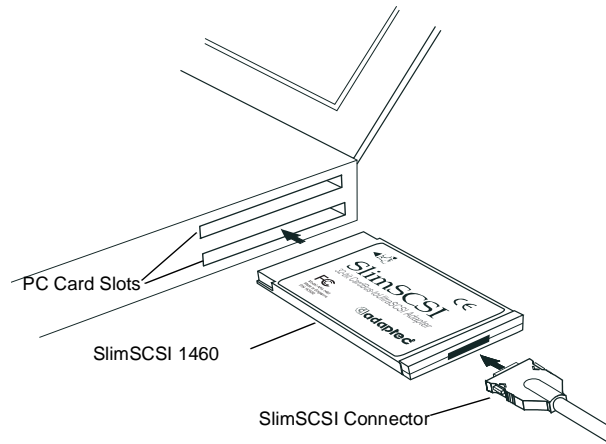
- 1** Remove the SlimSCSI 1460 from its packaging.
- 2** Determine which of the two 50-pin cables you will use to connect the SlimSCSI 1460 to your first (or only) SCSI device. To do this, see which cable connector (high-density or low-density) fits the SCSI connector on the back of the device.



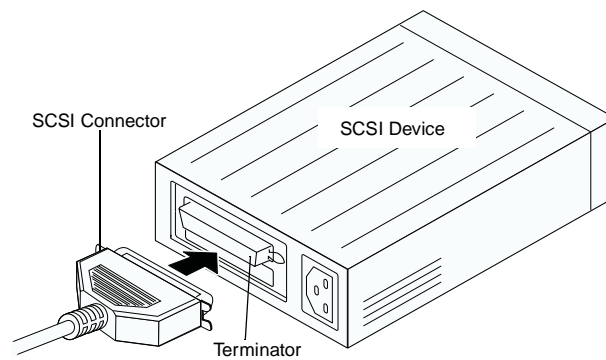
Note: If your SCSI device has a DB25 (25-pin) connector, you can order a free DB25 cable from Adaptec by sending in the card included in this kit.

Installing the SlimSCSI 1460

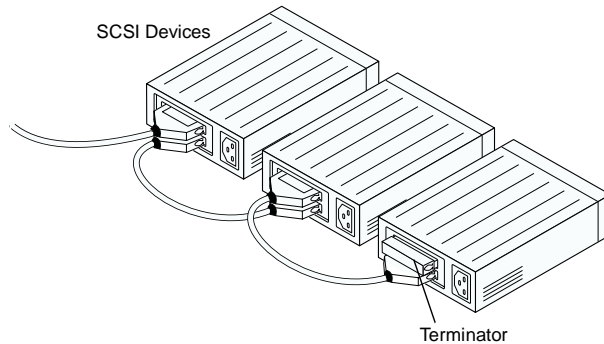
- 3** Connect the SlimSCSI cable to the SlimSCSI 1460, as shown below:



- 4** Plug the other end of the cable into the first (or only) SCSI device, as shown below. Make sure the SCSI device is not powered.

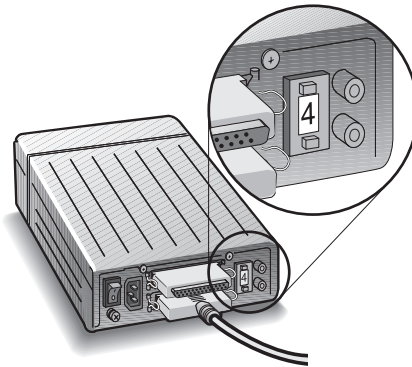


- 5** (Optional) Connect up to six additional SCSI devices by daisy-chaining them to the first device, as shown below:



- 6** Be sure that each SCSI device has a unique SCSI ID ranging from 0 to 6. If any two devices have the same ID, change the SCSI ID of one device. This is usually done by changing a switch on the back of the device. (For more information, see *SCSI IDs* on page 15.)

The diagram below shows a typical SCSI device with a selectable SCSI ID switch:



- 7** Terminate the *last* (or *only*) SCSI device connected to the SlimSCSI 1460. Read the device documentation if you are not sure how to terminate the device, or refer to *Terminating the SCSI Bus* on page 16.

Installing the SlimSCSI 1460

- 8** Be sure that at least one external SCSI device provides SCSI bus termination power or that the last device on the bus supplies termination power to itself. Read the device documentation if you are not sure whether the SCSI device provides termination power.
- 9** Connect all power cables to the SCSI devices. Then power up all the devices.
- 10** Insert the SlimSCSI 1460 into one of your portable PC's PC Card slots.
- 11** Power up your portable PC.

This completes the physical installation of your SlimSCSI 1460 and SCSI devices. Next, you need to install the software driver for your operating system.

Completing the Installation

Updating the Windows 95 Miniport Driver



Windows 95 has built-in software support for the SlimSCSI 1460. This means that when you install the SlimSCSI 1460, Windows automatically finds and installs the driver for it. However, you may be able to achieve better data I/O performance by installing the updated driver from the diskette included with the SlimSCSI 1460. Follow these steps if you wish to do this:

- 1 If Windows 95 is not already running, start it now.
- 2 Insert the Windows 95 drivers diskette in the portable PC's floppy disk drive.
- 3 Double-click the **My Computer** icon and Double-click the **Control Panel** icon.
- 4 Double-click the **Add New Hardware** icon. The Add New Hardware Wizard screen appears.
- 5 Click **Next**. When the next screen appears, select **No** and click **Next**.
- 6 When the next screen appears, select the **SCSI controllers** icon and click **Next**. (You may need to scroll down before you can see the icon.)
- 7 When the next screen appears, click **Have Disk**. Type a: if it does not already appear on the screen, and click **OK**.
- 8 When the next screen appears, select **APA-1460B PCMCIA SCSI Host Adapter**, if it is not already highlighted, and click **Next**.
- 9 When the next screen appears, click **Finish**.
- 10 Reboot your PC if Windows 95 prompts you to do so; if there is no prompt, you do not need to reboot in order to start using the new driver.

Completing the SlimSCSI Installation in Windows 3.1



- 1** If Windows 3.1 is not already running, start it now.
- 2** Insert the Adaptec EZ-SCSI diskette #1 in the PC's floppy disk drive.
- 3** Select **File/Run** from the Program Manager menu.
- 4** When the Run dialog box appears, type **a:\setup**, and click **OK**.
- 5** Follow the instructions that appear on the screen.
- 6** When EZ-SCSI is installed and your PC recognizes the SlimSCSI adapter, continue with *Using the SlimSCSI 1460* on page 13.



Note: If your PC does not recognize the SlimSCSI adapter and SCSI devices, there may be a resource allocation problem. Review the *General Hardware Troubleshooting* on page 18.

Completing the SlimSCSI Installation in Windows NT



The SlimSCSI adapter is supported under Windows NT *version 3.51 and higher*.



Note: Windows NT 3.51 does not support *hot plugging* or *hot swapping*. This means that the SlimSCSI adapter and the devices connected to it must be plugged in and powered ON before you start Windows NT and that you cannot remove the adapter (or other PC Cards) while Windows NT is running.

If Windows NT Is Not Installed on Your PC

If Windows NT is *not* already installed on your PC, install it now and then continue with the instructions in the next section, *If Windows NT Is Installed on Your PC*.

Follow these steps if you need to install Windows NT from a CD-ROM drive connected to your SlimSCSI adapter:

- 1** Insert the SlimSCSI adapter in a PC Card slot, connect the CD-ROM drive to it, and turn the drive ON.

Be sure the CD-ROM drive is *terminated*, if it is the last (or only) SCSI device on the bus. Also, be sure that you have installed your PC's version of DOS Card and Socket Services.
- 2** Boot the PC to DOS and insert the EZ-SCSI diskette #2 in the PC's floppy drive.
- 3** At the DOS prompt, change to the drive letter of the floppy drive (usually a:), type `dosinst`, and press **Enter**.
- 4** Follow the instructions that appear on the screen. EZ-SCSI will install the drivers required by the CD-ROM drive.

Completing the Installation

- 5 When EZ-SCSI installation is complete, remove the diskette and reboot your PC to DOS. A drive letter should now be assigned to your CD-ROM drive.
- 6 Insert the Windows NT installation CD in the CD-ROM drive and change to the `\i386` directory on the CD.
- 7 At the DOS prompt, type `winnt /b` and press **Enter**.
- 8 Install Windows NT by following the instructions that appear on the screen.

When Windows NT is installed, continue with the next section, *If Windows NT Is Installed on Your PC*.

If Windows NT Is Installed on Your PC

You must complete *all* steps in this section, even though Windows NT is already installed on your PC. These steps ensure that the required Windows NT registry changes are made.

- 1 Be sure that the SlimSCSI adapter is inserted in a PC Card slot and that the CD-ROM drive is connected to it and is turned ON.
- 2 Start Windows NT on your PC.
- 3 Double-click the Windows NT **Setup** program icon in the Main group.
- 4 Select **Options** from the Setup menu bar, then select **Add/Remove SCSI Adapters**. A list of all currently installed SCSI adapters will appear.



Note: If Adaptec 151x/152x/AIC-6260/6360 appears on the list, select it and click **Remove**.

- 5 Click **Add**, then click **OK** to verify that you want to add an adapter.
- 6 When the Select SCSI Adapter Option dialog box appears, select **Other** from the Adapter window.
- 7 Insert the Windows NT/OS2/Windows 95 Driver diskette (included with your SlimSCSI adapter) in the PC's floppy drive. Type `a:\winnt` in the dialog box and click **OK**.

- 8 Select **APA-1425/50/60 SCSI Host Adapter, for NT 3.51** from the list and click **OK** to add it to the list of SCSI adapters.
- 9 Select **APA-1425/50/60 SCSI Host Adapter, for NT 3.51** from the list of SCSI adapters and click **Install**. Follow the instructions that appear on the screen.
- 10 When the Setup program displays an updated list of currently installed host adapter types, verify that *APA-1425/50/60 SCSI Host Adapter, for NT 3.51* appears on the list.
- 11 Click **Close**, and exit Setup; then restart your PC when you are prompted to do so.
- 12 When Windows NT starts again, insert the EZ-SCSI diskette #1 in the floppy disk drive.
- 13 Select **Run** from Program Manager's File menu.



Note: If you are using Windows NT 4.0, click the **Start** button, and select **Run**.

- 14 Type **a:\setup** and click **OK** to install EZ-SCSI.
- 15 When Adaptec EZ-SCSI is installed, continue with *Using the SlimSCSI 1460* on page 13.

Completing the SlimSCSI Installation in OS/2



Here is some important information about using the SlimSCSI adapter in computers running under OS/2:

- OS/2 *must already be installed* before you begin these installation steps. OS/2 does not support installation from a CD-ROM drive connected to a PC Card such as the SlimSCSI adapter.
- OS/2 does not support *hot-plugging*. This means that the SlimSCSI adapter and the devices connected to it must be plugged in and powered ON before you start OS/2 and that you cannot remove the adapter (or other PC Cards) while OS/2 is running.

Follow these steps to complete installation of the SlimSCSI adapter under OS/2 versions 2.x, 3.0, or 4.0 (Warp).

- 1 Be sure that the SlimSCSI adapter is inserted in a PC Card slot and that the SCSI disk drive and/or other SCSI devices are connected to it and are turned ON.
- 2 Start OS/2.
- 3 Open the **OS/2 System** icon, then open the **System Setup** icon. Double-click the **Selective Install** icon.



Note: In version 4.0 (Warp), select the **Install/Remove** icon.

- 4 Click **PCMCIA Support**, select the PCMCIA system appropriate to your PC, and click **OK**.
- 5 Click **Install** and follow the instructions that appear. (You will be instructed to insert a series of OS/2 diskettes.)
- 6 When the installation procedure is completed, click **OK**.
- 7 Insert the Windows NT/OS2/Windows 95 Driver diskette in drive A.

- 8 Open the **OS/2 System** icon, and then open the **System Setup** folder. Double-click the **Device Driver Installation** icon.



Note: In version 4.0 (Warp), select the **Install/Remove** icon.

- 9 Click **Change**, double-click the **OS2** directory, and click **Install**. The *aha152x.add* file is now installed on your PC, and the required changes are made to your *config.sys* file.
- 10 If you are installing a CD-ROM drive, select a CD-ROM from the Selective Install icon.
- 11 When automatic installation completes, restart your PC. The installation is now complete.
- 12 Continue with *Using the SlimSCSI 1460* on page 13.

Follow these steps if automatic installation does not complete successfully:

- 1 Use a text editor to add these lines to the *config.sys* file. (Be sure to place them before other *basedev* lines.)

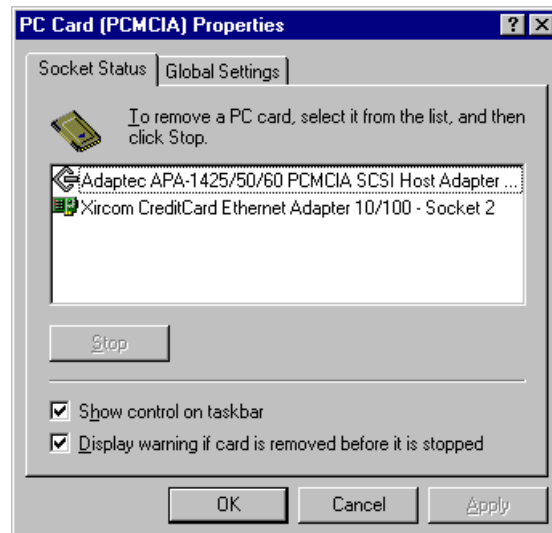
```
basedev=aha152x.add /v  
basedev=os2scsi.dmd
```
- 2 Copy the *aha152x.add* file from the *los2* directory of the Windows NT/OS2/Windows 95 Driver diskette to *los2\boot*.
- 3 Restart your PC. The installation is now complete.
- 4 Continue with the next section, *Using the SlimSCSI 1460*.

Using the SlimSCSI 1460

Hot Plugging

After you install the SlimSCSI 1460 driver in your Windows 95 PC, you can insert or remove the SlimSCSI 1460 at any time except when data is being transferred on the SCSI bus. This is called *hot plugging*. (You can tell that data is being transferred if the SCSI device activity light is on.) Follow these steps to remove the SlimSCSI 1460 while Windows 95 is running

- 1 Click on the small **PC Card (PCMCIA)** icon in the lower right corner of the screen. You will see a dialog box similar to the following:



- 2 Select **Adaptec APA-1425/50/60 PCMCIA SCSI Adapter**.
- 3 Click the **Stop** button.

- 4 When you see the message *You may safely remove this device*, remove the SlimSCSI 1460 from the slot.



Caution: Your PC may hang if you remove the adapter before the message appears.

When you insert the SlimSCSI 1460 adapter while Windows 95 is running, Windows 95 detects the adapter and the device(s) connected to it. (Be sure the devices are powered before you insert the adapter!)

Disk Partitioning

If you want to use a new, unpartitioned SCSI drive with your SlimSCSI adapter, you must first partition the drive. Follow these instructions:

- *Windows 3.x or Windows 95 PCs:* Boot the PC to DOS and partition the drive with the *afdisk.exe* utility. (This utility is installed in the *lscsi* directory when you install EZ-SCSI.) If you are running Windows 3.1, use the Disk Partitioner program found in the Adaptec SCSI program group. Disk Partitioner is not supported under Windows 95.
- *Windows NT 3.51 PCs:* Start Windows NT, and use the Disk Administrator program (in the Administrative Tools program group) to partition the drive.
- *OS/2 PCs:* Currently, you cannot partition a SCSI drive connected to the SlimSCSI adapter while OS/2 is running. There are two ways you can partition the drive:
 - 1 Boot the PC to another operating system, such as DOS or Windows 3.x, and follow the instructions under the *Windows 3.x or Windows 95 PCs* bullet.
 - 2 Partition and format the drive on another PC first.

Understanding SCSI

SCSI (pronounced “scuzzy”) stands for **S**mall **C**omputer **S**ystems **I**nterface. SCSI is an industry standard computer interface for connecting SCSI devices (such as hard disk drives, CD-ROM drives, and scanners) to a common SCSI bus.

A *SCSI bus* is an electrical pathway consisting of a SCSI adapter (such as the SlimSCSI adapter) installed in a computer and one or more SCSI devices. SCSI cables are used to connect the devices to the SCSI card.

For the SCSI bus to function properly, SCSI IDs must be assigned to the SCSI devices and the SCSI adapter, and the SCSI bus must be properly terminated.

SCSI IDs

Each device attached to the SlimSCSI 1460 adapter, as well as the adapter itself, must be assigned a unique SCSI ID number from 0 to 6. A SCSI ID uniquely identifies each SCSI device on the SCSI bus and determines priority when two or more devices are trying to use the SCSI bus at the same time.

- The SlimSCSI 1460 adapter is preset to SCSI ID 7, which gives it the highest priority on the SCSI bus.
- In Windows 95, you can use the Device Manager to view the SCSI ID and other information about each installed SCSI device.
- If you installed Adaptec EZ-SCSI software, you can use the SCSI Explorer utility to view the SCSI ID and other information about each installed SCSI device.

Terminating the SCSI Bus

To ensure reliable communication on the SCSI bus, *terminators* must be installed (or enabled) on the devices at the physical ends of the SCSI bus. The terminators on all devices between the physical ends must be removed (or disabled). Termination on the SlimSCSI 1460 is permanently enabled, since it is always at one end of the SCSI bus.

There are various methods for terminating disk drives and other SCSI devices. Read the device documentation if you are not sure how to do this. Here are some general guidelines for termination:

- Termination is usually controlled by installing or removing a SCSI terminator. On some SCSI devices, termination is controlled by setting a switch on the back of the device, as shown in the illustration on page 4.
- Most SCSI devices come from the factory with termination enabled.

Obtaining SCSI Cables

You will need additional SCSI cables if you connect more than one SCSI device to your SlimSCSI 1460. It is important to use high-quality cables to ensure that data is read and written correctly. Adaptec provides high-quality SCSI cables designed specifically for use with the SlimSCSI 1460. For purchasing information, contact Adaptec at 1-800-442-7274, Monday to Friday, from 6 a.m. to 5 p.m. (Pacific Time).

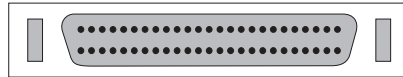
External SCSI Cables

PCMCIA 26-pin to High-Density 50-pin Cable
PCMCIA 26-pin to Centronics 50-pin Cable
PCMCIA 26-pin to DB25 Cable¹

¹ See the free cable offer on the card included in this *User's Guide*

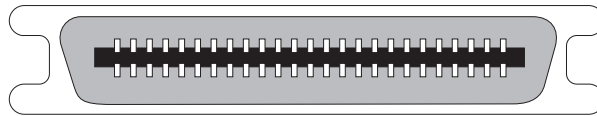
Connector Types

Several different types of SCSI connectors are used on SCSI devices, and each type requires a different kind of cable. The following diagrams illustrate the different kinds of SCSI connectors:



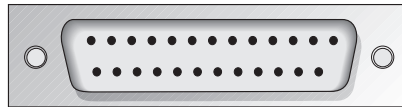
SCSI-2 High-density 50-pin Connector

Typically used with high-performance CD-ROM drives, hard disk drives, Jaz drives, and Plug and Play devices.



SCSI-1, Low-density Centronics 50-pin Connector

Used with many CD-ROM drives, hard disk drives, SCSI tape drives, and scanners



DB25 Connector

Used with Iomega ZIP drives, Syquest EZFlyer, etc.

If you have a SCSI device with a DB25 connector, you can order a free DB25 cable from Adaptec to connect it to the SlimSCSI 1460. The mail-in card for the cable is inserted in this *User's Guide*.

The total length of cabling on the SCSI bus should not exceed the maximum lengths listed in the following table:

| Maximum Cable Lengths | | |
|---------------------------|---|----------------------|
| Maximum Devices Supported | Data Transfer Rate | Maximum Cable Length |
| 3 | Fast SCSI (10 MBytes/sec) | 3 m (9.8 ft.) |
| 3 | 5 MBytes/sec asynchronous or synchronous | 6 m (19.7 ft.) |

Troubleshooting

Most problems with the SlimSCSI 1460 result from errors in preparing and connecting the SCSI devices to it. If you have problems, check the items below.



Note: If you have problems with a specific SCSI device when other SCSI devices are working correctly, contact the manufacturer of the problem device for troubleshooting information.

General Hardware Troubleshooting

- Be sure all SCSI cables and power cables are properly connected and all SCSI devices are powered.
- Be sure the SlimSCSI 1460 is firmly seated in the PC Card slot.
- Be sure each SCSI device has a different SCSI ID.
- Be sure the last (or only) SCSI device on the SCSI bus is terminated.
- Be sure at least one SCSI device connected to the SlimSCSI 1460 supplies termination power to the SCSI bus. Otherwise, the SCSI devices will not work correctly. (Some devices have a switch to enable or disable termination power. See the device documentation for more information.)

The SlimSCSI 1460 terminates itself but does not provide termination power to other devices on the SCSI bus (the adapter would need to draw this power from the portable PC's battery, which would not be desirable).

Windows 95 Troubleshooting

How do I determine if the Windows 95 socket is enabled and is running correctly?

- 1 Insert the SlimSCSI 1460 in the PC Card slot.
- 2 Click the **Start** button and click **Settings**.

- 3 Click **Control Panel**.
- 4 Double click the **System** icon, and then select the **Device Manager** tab.
- 5 Double-click **SCSI controllers**. If APA-1450/60 PCMCIA is not listed, double click **Other Devices**.
- 6 If PCMCIA Socket is not listed, or if it is listed but has a yellow exclamation mark or a red "X" next to it, PCMCIA Socket has not been loaded properly or is not configured properly. See your Windows 95 documentation for more information.

When I start Windows 95, the system locks up when the Windows logo is displayed. How can I get the system to start so I can verify that the SlimSCSI 1460 is functioning normally?

- 1 Start or restart your PC, and view the onscreen messages.
- 2 When Starting Windows 95 appears, press and release **F8** while the text is on the screen.
- 3 From the menu that is displayed, select **Safe Mode**. (It may take several minutes for Windows 95 to load.)
- 4 Verify that the SlimSCSI 1460 software driver is loading properly (see below).

How do I determine if the SlimSCSI Windows 95 miniport driver is working correctly?

- 1 Insert the SlimSCSI 1460 into the PC Card slot, if it is not already inserted.
- 2 Click the **Start** button and click **Settings**.
- 3 Click **Control Panel**.
- 4 Double-click the **System** icon, then select the **Device Manager** tab.
- 5 Double-click **SCSI controllers**. The driver for the SlimSCSI adapter is listed as Adaptec APA-1450/60 PCMCIA SCSI Adapter.
 - If the driver is listed, this means it is loaded properly.

- If the driver is listed but has an exclamation mark inside a yellow circle, it is in a problem state (usually indicating a conflict with other hardware using the same resources.)
- If the driver is listed but has an "X" inside a red circle, this indicates that it is disabled and is not loading.
- If the SCSI controllers icon or the APA[™]-1460 driver is not listed, reinstall the driver (see directions on page 6).



Note: Software upgrades (including downloadable drivers) for Adaptec products are available on the Adaptec Web site at <http://www.adaptec.com>

An "X" inside a red circle appears with the SlimSCSI 1460 software driver in Device Manager. What does this mean?

It means that the software driver is disabled and is not loading. Follow these steps to enable the driver:

- 1 Double-click the SlimSCSI 1460 software driver in Device Manager.
- 2 Under the **General** tab, check the **Original Configuration** (current) box.

What if there is no SCSI controllers icon under Device Manager, or the SlimSCSI 1460 software driver does not appear under Device Manager?

If the SCSI controllers icon or the software driver does not appear:

- 1 Double-click the **Add New Hardware** icon in the Control Panel.
- 2 Select **Yes** on the second screen of the Add New Hardware Wizard to have Windows search for the SlimSCSI 1460.
- 3 Follow the onscreen instructions.

If Windows 95 does not detect the SlimSCSI 1460, run the Add New Hardware Wizard again:

- 1 Double-click **Add New Hardware** in the Control Panel.
- 2 Select **No** on the second screen of the wizard.

- 3** Select **SCSI controllers** on the next screen.
- 4** Select the model of your Adaptec SCSI adapter.

If the SlimSCSI 1460 is not listed, you may be able to install the driver from the Windows 95 CD-ROM. To do this, follow these steps:

- 1** Place the Windows 95 CD-ROM in your CD-ROM drive and run the Add New Hardware wizard.
- 2** Select **No** on the second screen of the wizard.
- 3** Select **SCSI controllers** on the next screen.
- 4** Click the **Have Disk** button, then click the **Browse** button.
- 5** Look in the `\drivers\storage` directory of the CD-ROM and select the model of your SCSI adapter.

How can I check the status of a resource (for example, IRQ, Memory, I/O)?

- 1** Click the **Start** button, point to **Settings**, then click **Control Panel**.
- 2** Double-click the **System** icon, then click the **Device Manager** tab.
- 3** Click **Computer**, then click **Properties**.
- 4** On the View Resources tab, click the option button for the type of resource you want to check. Read the information.
 - If a specific resource is not listed, the resource is not used by a device.
 - If a resource is listed more than once, the resource is used by more than one device.
 - If a resource is used by an unknown device, the resource is used but the device using the resource cannot be detected.

How do I use the Hardware Conflict Troubleshooter in Windows 95?

- 1** Click the **Start** button, then click **Help**.
- 2** From the Contents tab, double-click **Troubleshooting**.
- 3** Double-click **If you have a hardware conflict**.

- 4 Follow the step-by-step instructions in the Help topic.

Windows NT Troubleshooting

Follow these steps if CD-ROM drives or hard disk drives do not appear in File Manager or in Disk Administrator:

- 1 Open **Control Panel**, then open **Devices**.
- 2 Look at the **scsidisk** and **scsicdr** devices.
- 3 If **scsidisk** and/or **scsicdr** have not been started, select them and set the device to **System** by clicking on the **Startup** button.
- 4 Reboot the PC.

Follow these steps to determine if the SlimSCSI drivers have loaded properly:

- 1 Open **Control Panel**, then open **Devices**.
- 2 Look at the **sparrow** device.
- 3 If the **sparrow** device has not been started, there is a device or resource problem.

You can also check for errors in loading drivers by opening **Administrative Tools** and then opening **Event Viewer**.

OS/2 Troubleshooting

Your SCSI subsystem and SCSI devices may become unstable when your laptop PC enters suspend mode (APM). (This is due to the way in which IBM has implemented suspend mode in OS/2.) If this problem occurs, disable suspend mode.



Contacting Adaptec

If you have questions about installing or using your Adaptec product, check this *User's Guide* first—you will find answers to most of your questions here. If you need further assistance, please contact us. We offer the following support and information services:

Electronic Support

Technical information, including product literature, answers to commonly asked questions, information on software upgrades and other topics is available electronically through the following:

- Adaptec World Wide Web (WWW) site at
<http://www.adaptec.com>
- File Transfer Protocol (FTP) server at *<ftp.adaptec.com>*
- Adaptec USA Bulletin Board Service (BBS); supports up to 28,800 bps (bits per second), 8 data bits, 1 stop bit, no parity. No product literature is available on the Adaptec BBS.
USA: (408) 945-7727
Belgium: (32) 2-352-3454
Germany: (49) 89-45640618
France: (33) 1-3060-9539
UK: (44) 1276-684184
- Interactive Fax System available 24 hours a day, 7 days a week.
USA: 408-957-7150
Europe: (32) 2-352-3869

Technical and Product Support

- For technical support and information about many of Adaptec's electronic support services, call 800-959-7274 or 408-945-2550, 24 hours a day, 7 days a week.
- To use the Adaptec Interactive Support System, call 800-959-7274 or 408-945-2550, 24 hours a day, 7 days a week. The system prompts you with questions regarding your problem and then provides step-by-step troubleshooting instructions.
- To speak with a product support representative, call 408-934-7274, M–F, 6:00 A.M. to 5:00 P.M., Pacific Time. After hours, on weekends, and on holidays, product support is also available for a fee at 800-416-8066.
- To speak with a product support representative in Europe call:
French: (32) 2-352-3460
English: (32) 2-352-3470
German: (32) 2-352-3480

Sales and Ordering Information

- For sales information, call 800-959-7274 or 408-945-2550, M–F, 6:00 A.M. to 5:00 P.M., Pacific Time.
- To order Adaptec software and SCSI cables, call 800-442-7274 or 408-957-7274, M–F, 6:00 A.M. to 5:00 P.M., Pacific Time.
- To request additional documentation for Adaptec products, call 800-934-2766 or 510-732-3829, M–F, 6:00 A.M. to 5:00 P.M., Pacific Time.
- For sales information in Europe call:
France: (33) 1-34-523434
Germany: (49) 89-4564060
UK: (44) 1276-854500

Copyright

© 1998 Adaptec, Inc. All rights reserved. No part of this publication may be reproduced, stored in a retrieval system, or transmitted in any form or by any means, electronic, mechanical, photocopying, recording or otherwise, without the prior written consent of Adaptec, Inc., 691 South Milpitas Blvd., Milpitas, CA 95035.

Trademarks

Adaptec, the Adaptec logo, APA, SlimSCSI, and EZ-SCSI are trademarks of Adaptec, Inc. which may be registered in some jurisdictions. Windows, Windows NT, and Windows 95 are registered trademarks of Microsoft Corporation in the U.S. and other countries used under license. All other trademarks are owned by their respective owners.

Changes

The material in this document is for information only and is subject to change without notice. While reasonable efforts have been made in the preparation of this document to assure its accuracy, Adaptec, Inc. assumes no liability resulting from errors or omissions in this document, or from the use of the information contained herein.

Adaptec reserves the right to make changes in the product design without reservation and without notification to its users.

Disclaimer

IF THIS PRODUCT DIRECTS YOU TO COPY MATERIALS, YOU MUST HAVE PERMISSION FROM THE COPYRIGHT OWNER OF THE MATERIALS TO AVOID VIOLATING THE LAW WHICH COULD RESULT IN DAMAGES OR OTHER REMEDIES.

Federal Communications Commission Radio Frequency Interference Statement

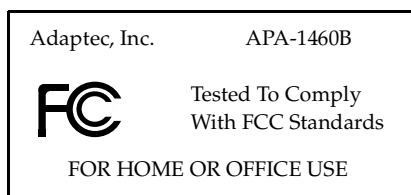
WARNING: Changes or modifications to this unit not expressly approved by the party responsible for compliance could void the user's authority to operate the equipment.

This equipment has been tested and found to comply with the limits for a Class B digital device, pursuant to Part 15 of the FCC rules. These limits are designed to provide reasonable protection against harmful interference in a residential installation. This equipment generates, uses, and can radiate radio frequency energy, and if not installed and used in accordance with the instruction manual, may cause harmful interference to radio communications. However, there is no guarantee that interference will not occur in a particular installation. However, if this equipment does cause interference to radio or television equipment reception, which can be determined by turning the equipment off and on, the user is encouraged to try to correct the interference by one or more of the following measures:

- Reorient or relocate the receiving antenna.
- Increase the separation between equipment and receiver.
- Connect the equipment to an outlet on a circuit different from that to which the receiver is connected.
- Consult the dealer or an experienced radio/television technician for help.

Use a shielded and properly grounded I/O cable and power cable to ensure compliance of this unit to the specified limits of the rules.

This device complies with part 15 of the FCC rules. Operation is subject to the following two conditions: (1) this device may not cause harmful interference and (2) this device must accept any interference received, including interference that may cause undesired operation.



Canadian Compliance Statement

This Class B digital apparatus meets all requirements of the Canadian Interference-Causing Equipment Regulations.

Cet appareil numérique de la classe B respecte toutes les exigences du Règlement sur le matériel brouilleur du Canada.

Adaptec Software License Agreement

In return for acquiring a license to use the software ("Software") and related documentation, you agree to the following terms and conditions:

- 1 License: This Agreement grants you, the Licensee, a license to:
 - a use the Software on a single computer system which incorporates an Adaptec SCSI Card, or in the case of a multi-user or networked system which permits access to the Software by more than one user at the same time, at a single working location.
 - b make one copy of the Software in machine readable form solely for back-up purposes provided you reproduce Adaptec's copyright notice and any proprietary legends.
- 2 Restrictions: You may not distribute copies of the Software to others or electronically transfer the Software from one computer to another over a network. You may not use the Software from multiple locations of a multi-user or networked system at any one time. The Software contains trade secrets and in order to protect them you may not decompile, reverse engineer, disassemble, or otherwise reduce the Software to a human-perceivable form. **YOU MAY NOT MODIFY, ADAPT, TRANSLATE, RENT, LEASE, LOAN, RESELL FOR PROFIT, DISTRIBUTE, NETWORK OR CREATE DERIVATIVE WORKS BASED UPON THE SOFTWARE OR ANY PART THEREOF.**
- 3 Ownership of Software: As Licensee, you own the media upon which the software is fixed, but Adaptec retains title and ownership of the Software recorded on the original media and all subsequent copies of the Software regardless of the form or media in which or on which the original and other copies may exist. This license is not a sale of the Software or any copy.
- 4 Confidentiality: You agree to maintain the Software in confidence and to not disclose the Software to any third party without the express written consent of Adaptec. You further agree to take all reasonable precautions to preclude access of unauthorized persons to the Software.
- 5 Term: This license is effective until January 1, 2042, unless terminated earlier. You may terminate the license at any time by destroying the Software (including the related documentation) together with all copies or modifications in any form. Adaptec will have the right to terminate your license immediately if you fail to comply with any term or condition of this Agreement. Upon any termination, including termination by you, you must destroy the Software (including the related documentation) together with all copies or modifications in any form.
- 6 Limited Warranty: Adaptec warrants only that the media upon which the Software is furnished will be free from defects in material or workmanship under normal use and service for a period of thirty (30) days from the date of delivery to you. **ADAPTEC DOES NOT AND CANNOT WARRANT THE PERFORMANCE OR RESULTS YOU MAY OBTAIN BY USING THE SOFTWARE OR DOCUMENTATION. THE FOREGOING STATES THE SOLE AND EXCLUSIVE REMEDIES ADAPTEC WILL PROVIDE FOR BREACH OF WARRANTY. EXCEPT FOR THE FOREGOING LIMITED WARRANTY, ADAPTEC MAKES NO WARRANTIES, EXPRESS OR IMPLIED, AS TO NONINFRINGEMENT OF THIRD PARTY RIGHTS, MERCHANTABILITY OR FITNESS FOR A PARTICULAR PURPOSE.** Some states do not allow the exclusion of implied warranties or limitations on how long an implied warranty may last, so the above limitations may not apply to you. This warranty gives you specific legal rights and you may also have other rights which vary from state to state.
- 7 Limitation of Liability: **IN NO EVENT WILL ADAPTEC BE LIABLE TO YOU FOR ANY SPECIAL DAMAGES, INCLUDING ANY LOST PROFITS, LOST SAVINGS OR OTHER INCIDENTAL OR CONSEQUENTIAL DAMAGES, EVEN IF ADAPTEC HAS BEEN ADVISED OF THE POSSIBILITY OF SUCH DAMAGES, OR FOR ANY CLAIM BY ANY OTHER PARTY.** Some states do not allow the exclusion or limitation of special, incidental, or consequential damages, so the above limitation or exclusion may not apply to you.
- 8 Limitation of Remedies: Adaptec's entire liability and your exclusive remedy shall be:
 - a the replacement of any media not meeting Adaptec's limited warranty which is returned to Adaptec; or
 - b if Adaptec or its distributor is unable to deliver replacement media which is free of defects in materials or workmanship, you may terminate this Agreement by returning the Software and your money will be refunded.

- 9 Export: You acknowledge that the laws and regulations of the United States restrict the export and re-export of the Software. You agree that you will not export or re-export the Software or media in any form without the appropriate United States and foreign government approval.
- 10 U.S. Government Restricted Rights Legend for Units of the DoD: Use, duplication or disclosure by the Government is subject to restrictions as set forth in subparagraph (c)(1)(ii) of the Rights in Technical Data and Computer Software clause at 252.227-7013. Adaptec, Inc., 691 South Milpitas Boulevard, Milpitas, California 95035.
- 11 U.S. Government Restricted Rights Legend for Civilian Agencies: Use, reproduction or disclosure is subject to restrictions as set forth in subparagraphs (a) through (d) of the Commercial Computer Software - Restricted Rights clause at 52.227-19 and the limitations set forth in Adaptec, Inc.'s standard commercial agreement for this software. Unpublished - rights reserved under the copyright laws of the United States.
- 12 General: You acknowledge that you have read this Agreement, understand it, and that by opening the package you agree to be bound by its terms and conditions. You further agree that it is the complete and exclusive statement of the agreement between Adaptec and you which supersedes any proposal or prior agreement, oral or written, and any terms of this Agreement or any different terms will be enforceable against Adaptec unless Adaptec gives its express consent, including an express waiver of the terms of this Agreement, in a writing signed by an officer of Adaptec. You assume full responsibility for the use of the Software and agree to use the Software legally and responsibly. This Agreement shall be governed by California law except as to copyright matters which are covered by Federal law. This Agreement is deemed entered into at Milpitas, California by both parties. Should any provision of this Agreement be declared unenforceable in any jurisdiction, then such provision shall be deemed to be severable from this Agreement and shall not affect the remainder hereof. All rights in the Software not specifically granted in this Agreement are reserved by Adaptec.

Should you have any questions concerning this Agreement, you may contact Adaptec by writing to: Adaptec, Inc., Legal Department, 691 South Milpitas Boulevard, Milpitas, California 95035.

Limited 5-Year Warranty

Adaptec, Inc. ("Adaptec") warrants to the purchaser of this product that it will be free from defects in material and workmanship for a period of five (5) years from the date of purchase. If the product should become defective within the warranty period, Adaptec, at its option, will repair or replace the product, or refund the purchaser's purchase price for the product, provided it is delivered at the purchaser's expense to an authorized Adaptec service facility or to Adaptec.

Repair or replacement parts or products will be furnished on an exchange basis and will either be new or reconditioned. All replaced parts or products shall become the property of Adaptec. This warranty shall not apply if the product has been damaged by accident, misuse, abuse or as a result of unauthorized service or parts.

Warranty service is available to the purchaser by delivering the product during the warranty period to an authorized Adaptec service facility or to Adaptec and providing proof of purchase price and date. The purchaser shall bear all shipping, packing and insurance costs and all other costs, excluding labor and parts, necessary to effectuate repair, replacement or refund under this warranty.

For more information on how to obtain warranty service, write or telephone Adaptec at 691 South Milpitas Boulevard, Milpitas, CA 95035, (800) 959-7274.

THIS LIMITED WARRANTY DOES NOT EXTEND TO ANY PRODUCT WHICH HAS BEEN DAMAGED AS A RESULT OF ACCIDENT, MISUSE, ABUSE, OR AS A RESULT OF UNAUTHORIZED SERVICE OR PARTS.

THIS WARRANTY IS IN LIEU OF ALL OTHER EXPRESS WARRANTIES WHICH NOW OR HEREFTER MIGHT OTHERWISE ARISE RESPECT TO THIS PRODUCT. IMPLIED WARRANTIES, INCLUDING THOSE OF MERCHANTABILITY, FITNESS FOR A PARTICULAR PURPOSE AND NON-INFRINGEMENT SHALL (A) HAVE NO GREATER DURATION THAN 5 YEARS FROM THE DATE OF PURCHASE, (B) TERMINATE AUTOMATICALLY AT THE EXPIRATION OF SUCH PERIOD AND (C) TO THE EXTENT PERMITTED BY LAW BE EXCLUDED. IN THE EVENT THIS PRODUCT BECOMES DEFECTIVE DURING THE WARRANTY PERIOD, THE PURCHASER'S EXCLUSIVE REMEDY SHALL BE REPAIR, REPLACEMENT OR REFUND AS PROVIDED ABOVE. INCIDENTAL OR CONSEQUENTIAL DAMAGES, INCLUDING WITHOUT LIMITATION LOSS OF DATA, ARISING FROM BREACH OF ANY EXPRESS OR IMPLIED WARRANTY ARE NOT THE RESPONSIBILITY OF ADAPTEC AND, TO THE EXTENT PERMITTED BY LAW, ARE HEREBY EXCLUDED BOTH FOR PROPERTY DAMAGE, AND TO THE EXTENT NOT UNCONSCIONABLE, FOR PERSONAL INJURY DAMAGE.

SOME STATES DO NOT ALLOW THE EXCLUSION OR LIMITATION OF INCIDENTAL OR CONSEQUENTIAL DAMAGES FOR CONSUMER PRODUCTS, AND SOME STATES DO NOT ALLOW LIMITATIONS ON HOW LONG AN IMPLIED WARRANTY LASTS, SO THE ABOVE LIMITATION OR EXCLUSIONS MAY NOT APPLY TO YOU.

This warranty gives you specific legal rights, and you may also have other rights which vary from state to state.

